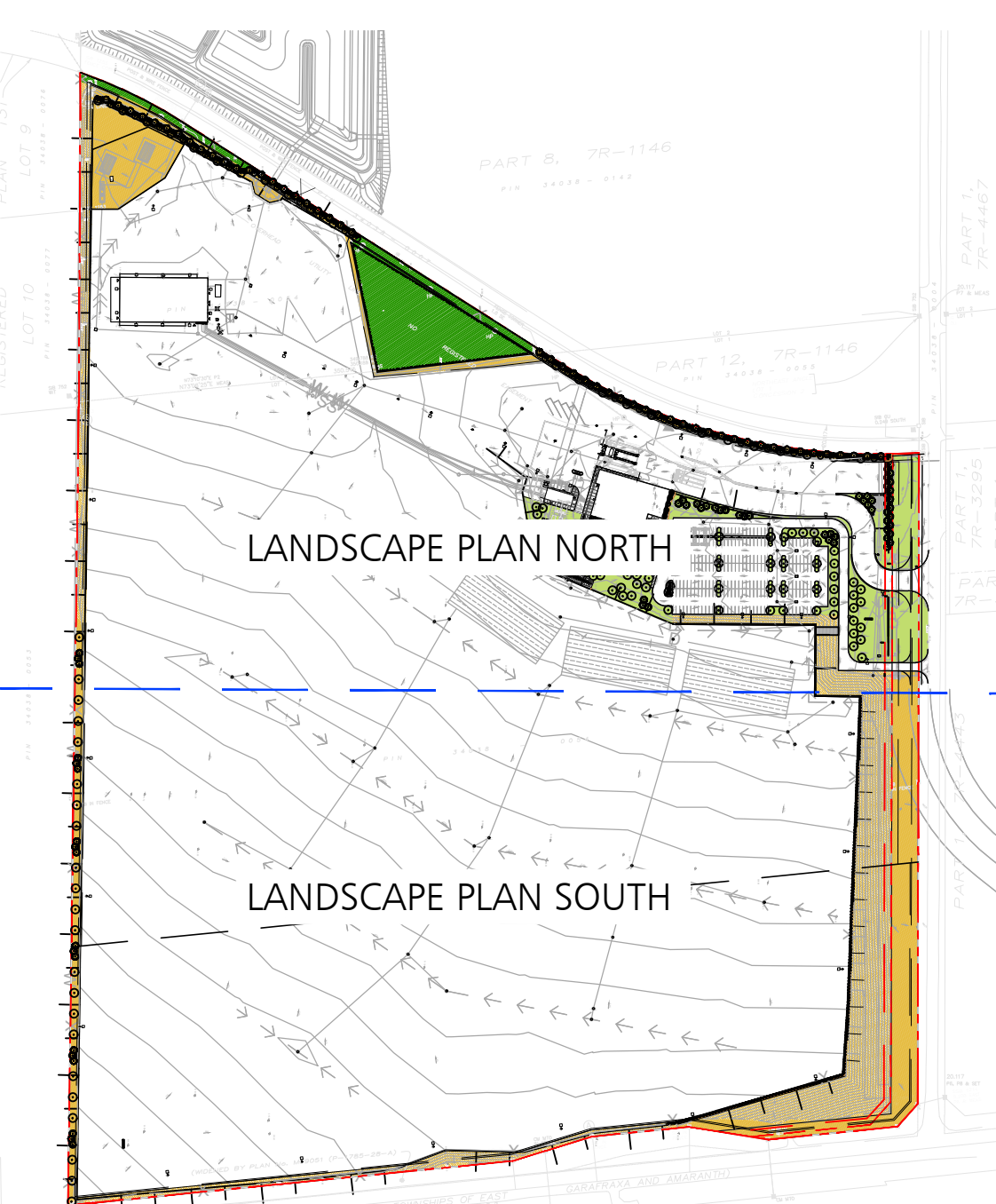


Upland Native Meadow Mix

Common Name	Scientific Name	% of Mix
Black Eyed Susan	Rudbeckia hirta	10%
Blue Wood (Heart Leaved Aster)	Aster cordifolius	1%
Canada Anemone	Anemone canadensis	1%
Canada Goldenrod	Solidago canadensis	2%
Common Milkweed	Asclepias syriaca	2%
Evening Primrose	Oenothera biennis	25%
Grass Leaved Goldenrod	Euthamia graminifolia	1%
Meadow/Open Field Sedge	Carex granularis	15%
New England Aster	Aster novae-angliae	1%
Riverbank Wild Rye	Elymus riparius	40%
Virginia Bower	Clematis virginiana	1%
Wild Bergamot	Monarda fistulosa	1%
		100%

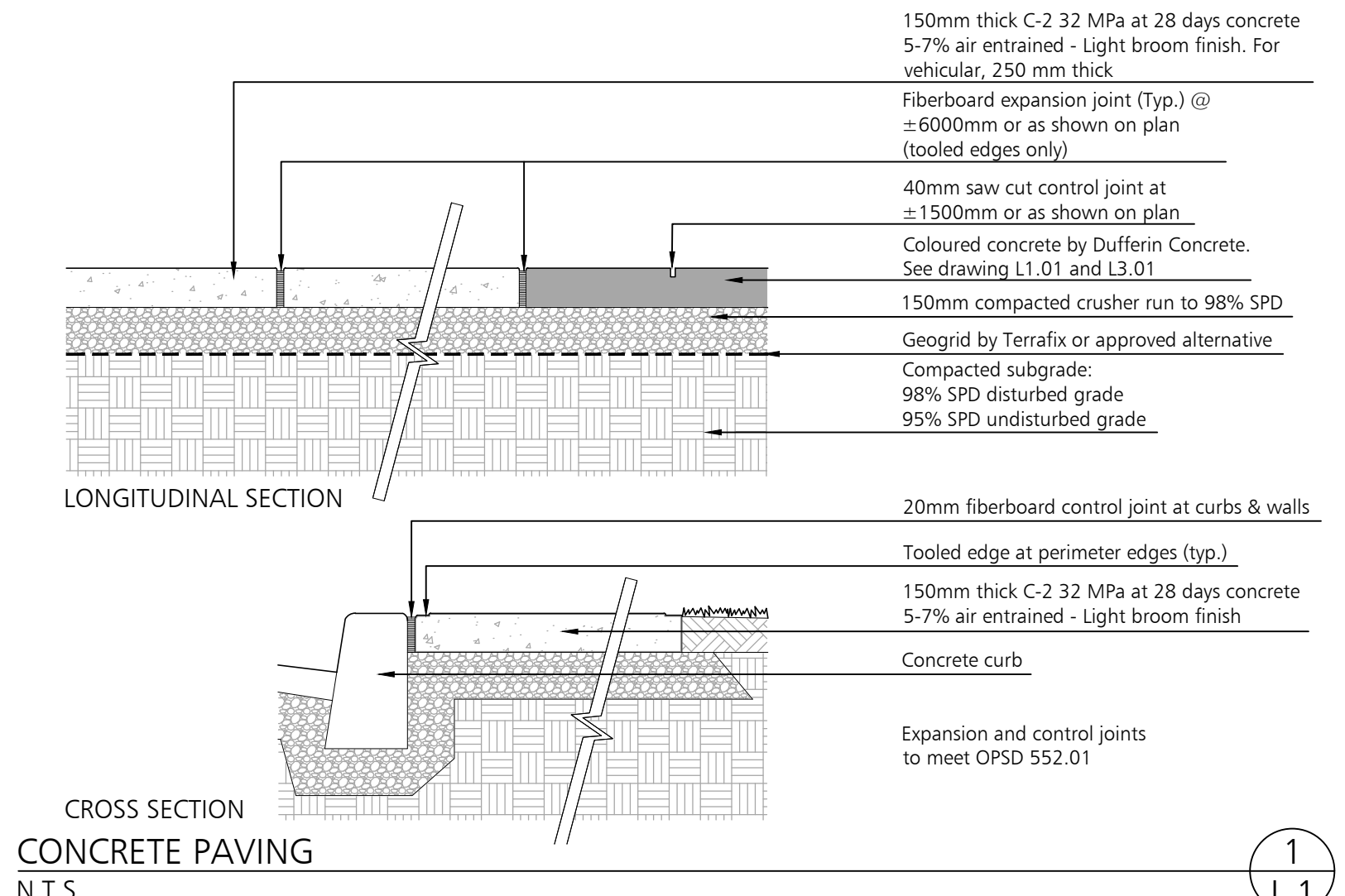
- HYDROSEED & EROSION CONTROL MAT NOTES:**
- Hydroseed mix to be applied with a blower truck over existing topsoil base (re-used topsoil from site)
 - Provide Hydroseed mix submittal to Landscape Architect for approval prior to ordering and installation.
 - Application of Hydroseed mix shall be in one of the following time windows: mid-April to late May or mid-September to late October
 - Erosion Control Mats to be by Terrafix or approved equal. Style subject to geotechnical engineer's recommendations. Install as per manufacturer's specifications. Lay overlap of Hydroseed application.



CONTEXT PLAN
1:5000

RIVER ROCK
N.T.S.

- Typical Notes for Dufferin Coloured Concrete:**
- Dosages noted on the inside chart are per 340 kg/M3 of Portland
 - Colours on the Dufferin Colour Palette are approximate, matched to concrete lab samples made with Type 10 Portland gray cement
 - Pigments conform to ASTM C 979
 - Consistency of colour of cement, aggregates, slump, finishing techniques and curing methods are critical in achieving uniformity of colour. A JOB SITE SAMPLE USING FULLY CURED CONCRETE WITH THE DESIRED COLOUR TO BE DONE FOR CUSTOMER APPROVAL. Non-chloride accelerators may be used with Dufferin Coloured Concrete.
 - Concrete should be batched, placed, cured and finished in accordance with CSA current standards.
 - To ensure that the colour consistency is maintained, a minimum load size of 3m3 per truck is strongly recommended.



- LEGEND**
- Property Line
 - Road Allowance Line
 - 1.8m Ht. Galvanized Chain Link Fence with Angled Barbed Wire Extension
 - 1.8m Ht. Galvanized Chain Link Fence with Straight Barbed Wire Extension
 - Proposed Deciduous Tree
 - Proposed Evergreen Tree
 - Proposed Deciduous Shrubs
 - Proposed Evergreen Shrubs
 - 150mm Depth Topsoil, Fine grade & Sod
 - Perennials & Ornamental Grasses
 - Concrete Paving
 - Bat Habitat
 - River rock
 - Upland Native Meadow Mix, Hydroseed Application with Blower Truck
 - Erosion Control Mats by Terrafix or approved equal. Install as per manufacturer's specifications over Hydroseed application (Upland Native Meadow Mix) with blower truck
- Note: All Drawings by Baker Turner inc. to be Printed in Colour.

REVISIONS

DATE	DESCRIPTION
Apr 23, 2024	Issued for SPA 3rd Submission
Nov 29, 2023	Issued for Submission
July 18, 2023	Issued for Submission
July 11, 2023	Issued for Coordination
April 7, 2023	Issued for SPA
Mar 17, 2023	Issued for Coordination
Dec 7, 2022	Issued for SPA
Dec 1, 2022	Issued for Coordination
Nov 4, 2022	Issued for SPA

NOTE: Contractor is to check and verify all dimensions and conditions on the project, and is to immediately report any discrepancies to the landscape architect before proceeding with the work.

BTi
Landscape Architecture | Site Design

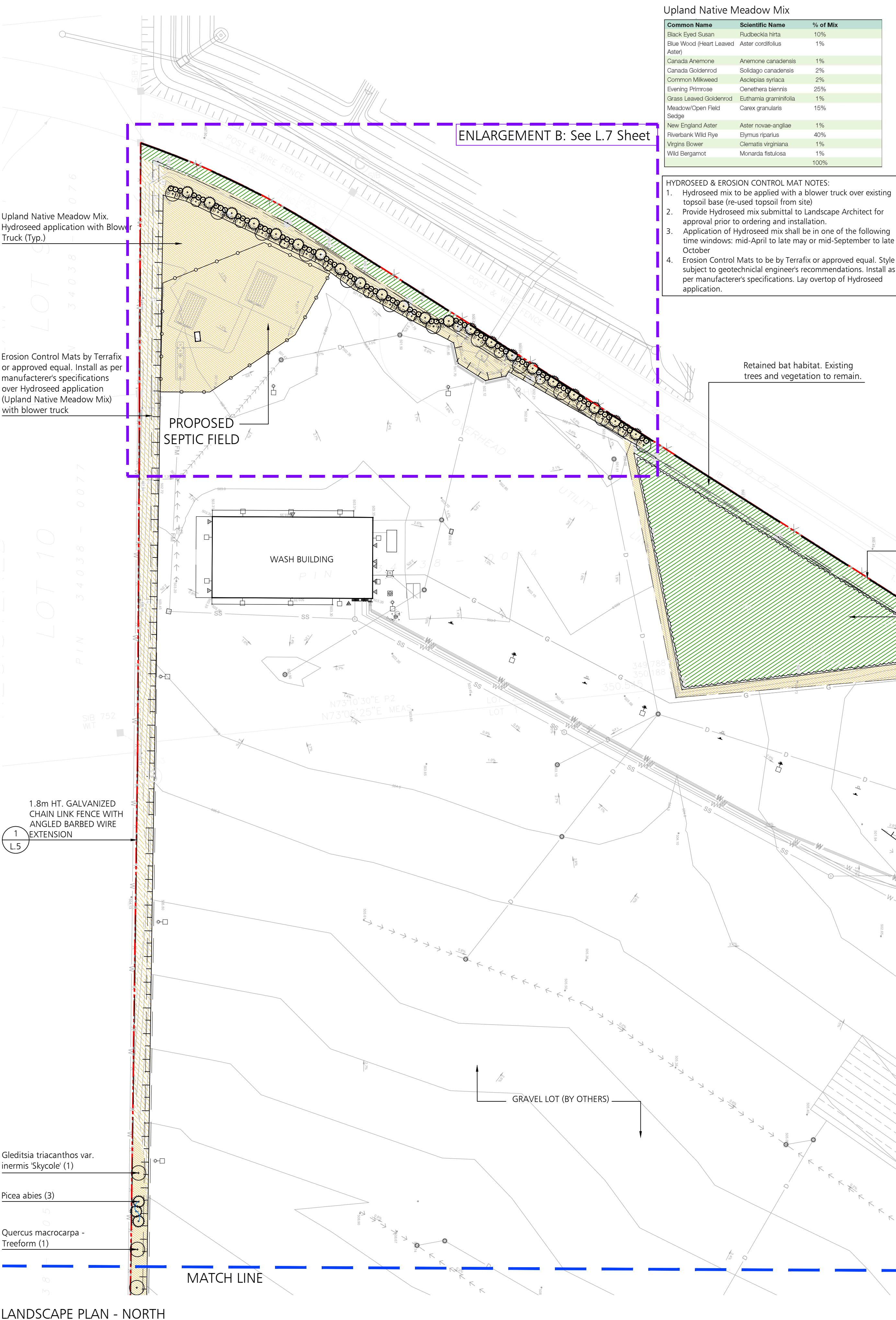
Suite 200, Second Floor
2010 Winston Park Drive,
Oakville Ontario L6H 5R7
Tel: (289) 291-7620
email: tba@bakerturner.com

Project Title

Ritche Bros. Auction House
2nd Line & Dufferin Road 109
Orangeville, ON
Landscape Plan - North

Date	Issued
September 2022	
Job Number	Drawn By
BTI-1652	SP
Scale	Checked By
As Shown	SP
Sheet Number	SPA Number
L1 of 6	SPA# 06 2022

NOT FOR CONSTRUCTION



LANDSCAPE PLAN - NORTH
1:1000

Planting

- Coordinate shipping of plants and excavation of holes to ensure minimum time lapse between digging and planting.
- Tie branches of tree and shrubs securely and protect plant material against abrasion, exposure, and extreme temperature during transit. Avoid binding of planting stock with rope or wire which would damage bark, break branches or destroy natural shape of plant. Give full support to root ball of large trees during lifting.
- Cover plant foliage with tarpaulin and protect bare roots by means to prevent loss of moisture during transit and storage.
- Provide a two (2) year warranty for plant material as itemized on plant list. At end of warranty inspection, all plant material will be in vigorous growing condition, free of pests and disease and true to natural form.
- During warranty period, remove from site any plant material that has died or failed to grow satisfactorily as determined by owner/architect/landscape architect. Extend warranty on replacement plant material for a period equal to the length of original warranty period. Remove trunk wrapping, tree stakes and guy wired at the end of the warranty period for visual inspection and rewrap.
- Plant material: comply with metric guide - specification for nursery stock, 1984 edition of Canadian Nursery Trades Association referring to size and development of plant material and root ball. Measure plants when branches are in their natural position. Height and spread dimensions refer to main body of plant and not from branch tip to branch tip. Use trees and shrubs of no. 1 grade.
- Stake out all tree locations and planting beds and obtain approval from architect/landscape architect/owner before excavation. The location of trees and planting areas where shown on drawings is approximate only and may require adjustment due to site conditions or as directed by the consultant.
- Plant only under conditions that are conducive to health and physical conditions of plants.
- Provide planting schedule, extending planting operations over a long period. Using limited crew will not be accepted.
- Excavate planting pits and beds to depth indicated on details. Fill with a planting mixture of one part peat moss, six parts topsoil with commercial bonemeal for planting holes in heavy soils if natural drainage does not exist. Have method approved.
- Immediately following any planting operations, remove all debris and excess material from site, leaving the site neat and tidy.
- It is the contractor's responsibility to maintain plant material for 30 days following planting or until time of final acceptance. Maintenance of plant material during warranty period is the owners responsibility.
- Maintenance tasks until time of final acceptance to include all of the following:
 - Watering
 - Fertilizing
 - Weed Control
 - Insect and Fungus Control
 - Pruning
- Submit separate maintenance cost for consideration by owner during warranty period only. Refer to maintenance specifications.

Note:

- *Plant material to conform to the Canadian Nursery Trades Association Metric Guide Specifications for Nursery Stock, latest edition.
- *Contractor to verify quantities listed: Plant quantities to be supplied as shown on plan in case of discrepancies between plan and quantities listed
- *Bare root stock for planting in early spring - before May 1, late fall - after October 21, otherwise all to be container grown.

TYPICAL SOFTSCAPE SPECIFICATIONS

Topsoil Placement & Fine Grading

- Ensure that the approval has been obtained for rough grading prior to proceeding with this section of work.
 - Scarify the rough graded areas to provide a loosened surface in order to allow bonding of the topsoil.
 - Spread topsoil on the prepared and accepted rough graded surface to a minimum depth of 100 mm firmly packed.
 - Keep topsoil 25 mm below finished grade for sodded areas elsewhere bring topsoil up to finished grade of adjacent surfaces.
 - The finished surface is to be smooth and even with no ruts, clods or contaminants.
 - Remove stones in excess of 10mm for area to be seeded.
 - Hand rake areas to be seeded or sodded as a final surface preparation coordinating the work to ensure that seeding or sodding can occur as soon as possible after raking has been completed.
- Sodding**
- Schedule deliveries in order to keep storage at job site to a minimum without causing delays.
 - Sod shall be certified #1 Nursery Grown sod containing 50% merion blue grass and 50% Kentucky blue grass. It shall be no greater than 40mm (1-1/2") in thickness and with accordance with the classification of turf grass sod for the province by the national sod growers association.
 - Obtain approval of topsoil grade and depth before starting sodding. Areas to be smooth graded by a landscape grader and hand raked to provide a completely smooth and even surface.
 - Lay sod in rows, perpendicular to slope, smooth and even with adjoining areas and with joints staggered. Butt sections closely without overlapping or leaving gaps between sections. Cut out irregular or thin sections with a sharp knife.
 - Stake all sod on slopes greater than 1:5 (20%).
 - Roll sod immediately after laying to press sod firmly on to the surface soil.
 - Water immediately after sod laying to obtain moisture penetration through sod into top 100mm (4") of topsoil. Water by means of a water truck or if approved, by hydrant to obtain a complete drenching. Watering by small hose and sprinkler is not sufficient. For the first 30 days, soak to this depth at least once a week.
 - Water in similar manner thereafter if sufficient rain does not fall, in order to keep the underlying surface moist. Watering until acceptance of the sod is the contractor's responsibility.
 - Immediately clean up soil or debris spilled onto pavement and dispose of deleterious materials.
 - Sodded areas will be accepted and warranty period begins provided that:
 - Sod is completely green
 - Sodded areas have been cut minimum of two times
 - Sod is knit to underlying soil and cannot be lifted when tugged by hand.
 - It is the contractor's responsibility to maintain sod until time of sod acceptance. Maintenance of sod after acceptance is the responsibility of owner.

LEGEND

- Property Line
- Road Allowance Line
- 1.8m Ht. Galvanized Chain Link Fence with Straight Barbed Wire Extension
- 1.8m Ht. Galvanized Chain Link Fence with Straight Barbed Wire Extension
- Proposed Deciduous Tree
- Proposed Evergreen Tree
- Proposed Deciduous Shrubs
- Proposed Evergreen Shrubs
- 150mm Depth Topsoil, Fine grade & Sod
- Perennials & Ornamental Grasses
- Concrete Paving
- Bat Habitat
- River rock
- Upland Native Meadow Mix. Hydroseed Application with Blower Truck
- Erosion Control Mats by Terrafix or approved equal. Install as per manufacturer's specifications over Hydroseed application (Upland Native Meadow Mix) with blower truck

Note: All Drawings by Baker Turner inc. to be Printed in Colour.

REVISIONS

DATE	DESCRIPTION
Apr 23, 2024	Issued for SPA 3rd Submission
Nov 29, 2023	Issued for Submission
July 18, 2023	Issued for Submission
July 11, 2023	Issued for Coordination
April 7, 2023	Issued for SPA
Mar 17, 2023	Issued for Coordination
Dec 7, 2022	Issued for SPA
Dec 1, 2022	Issued for Coordination
Nov 4, 2022	Issued for SPA

NOTE: Contractor is to check and verify all dimensions and conditions on the project, and is to immediately report any discrepancies to the landscape architect before proceeding with the work.

ASSOCIATION OF LANDSCAPE ARCHITECTS
ONARIO

BTi
Baker Turner Inc.

Landscape Architecture | Site Design

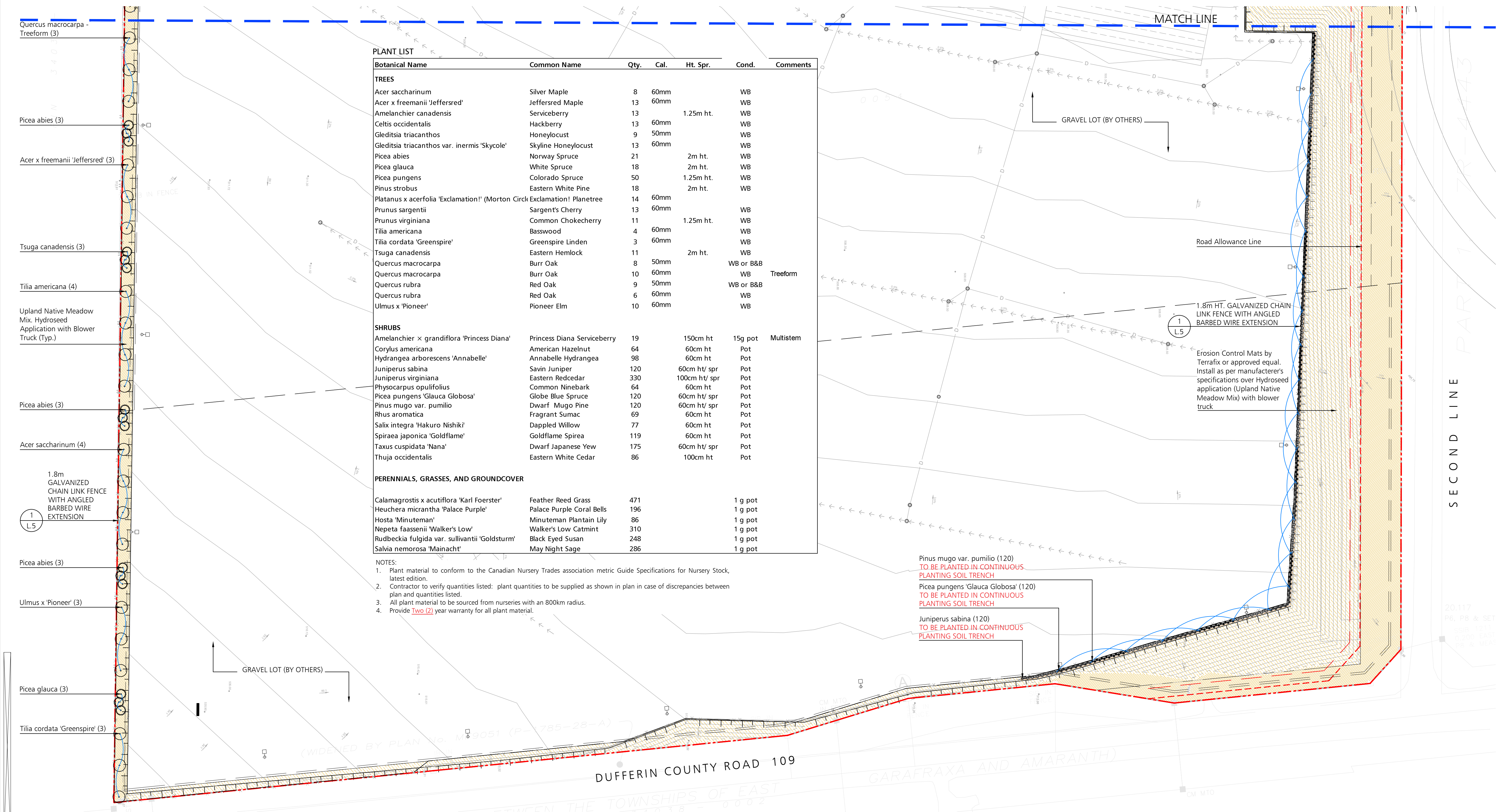
Suite 200, Second Floor
2010 Winston Park Drive,
Oakville Ontario L6H 5R7
Tel: (289) 291-7620
email: tba@bakerturner.com

Project Title

Ritche Bros. Auction House
2nd Line & Dufferin Road 109
Orangeville, ON

Landscape Plan - South

Date	Issued
September 2022	
Job Number	Drawn By
BTI-1652	AP
Scale	Checked By
As Shown	
Sheet Number	SPA Number
L2 of 6	SPA# 06 2022



PLANT LIST

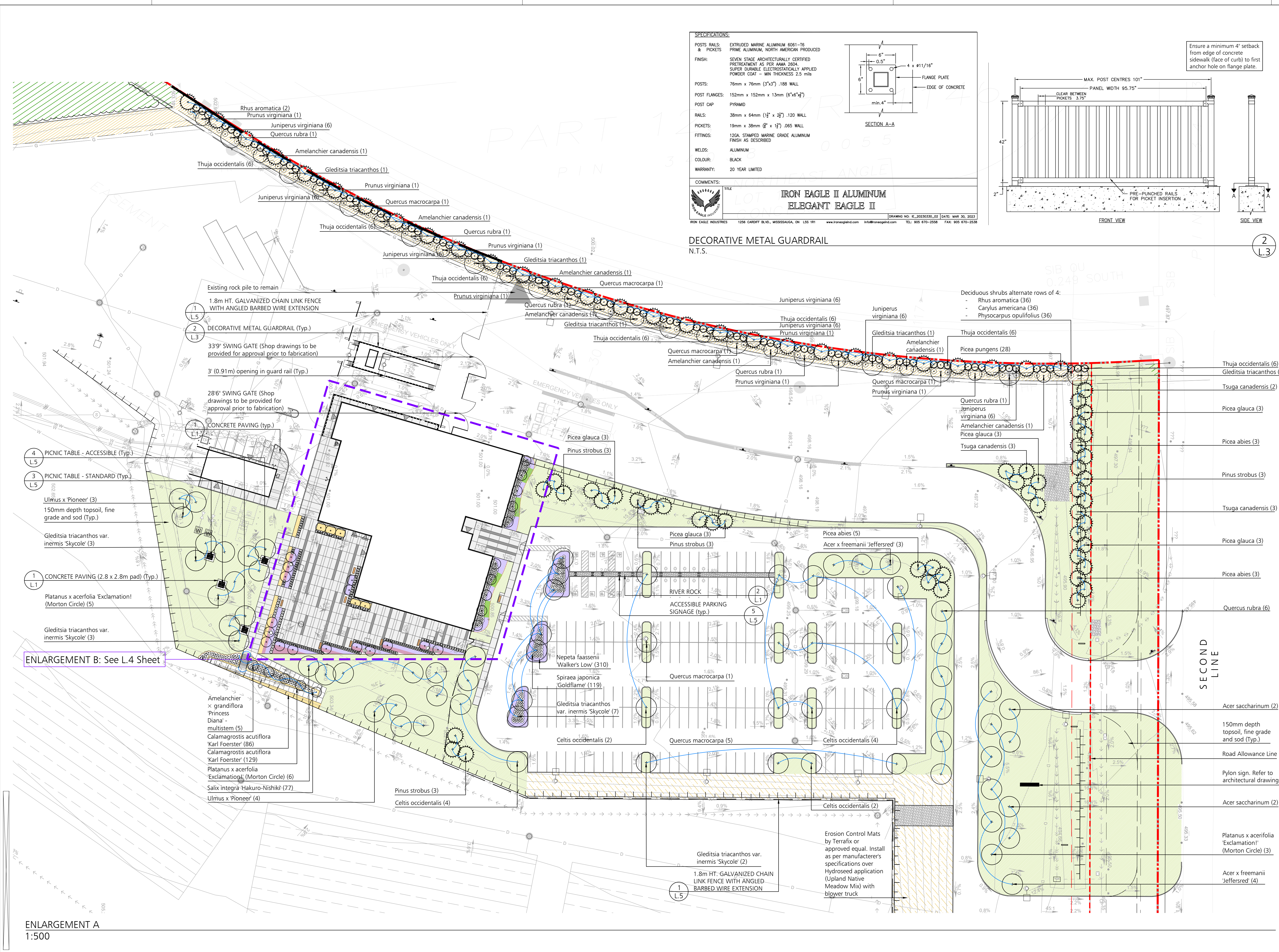
Botanical Name	Common Name	Qty.	Cal.	Ht. Spr.	Cond.	Comments
TREES						
Acer saccharinum	Silver Maple	8	60mm		WB	
Acer x freemanii 'Jeffersred'	Jeffersred Maple	13	60mm		WB	
Amelanchier canadensis	Serviceberry	13		1.25m ht.	WB	
Celtis occidentalis	Hackberry	13	60mm		WB	
Gleditsia triacanthos	Honeylocust	9	50mm		WB	
Gleditsia triacanthos var. inermis 'Skycole'	Skyline Honeylocust	13	60mm		WB	
Picea abies	Norway Spruce	21		2m ht.	WB	
Picea glauca	White Spruce	18		2m ht.	WB	
Picea pungens	Colorado Spruce	50		1.25m ht.	WB	
Pinus strobus	Eastern White Pine	18		2m ht.	WB	
Platanus x acerfolia 'Exclamation!' (Morton Circle Exclamation! Planetree		14	60mm			
Prunus sargentii	Sargent's Cherry	13	60mm		WB	
Prunus virginiana	Common Chokecherry	11		1.25m ht.	WB	
Tilia americana	Basswood	4	60mm		WB	
Tilia cordata 'Greenspire'	Greenspire Linden	3	60mm		WB	
Tsuga canadensis	Eastern Hemlock	11		2m ht.	WB	
Quercus macrocarpa	Burr Oak	8	50mm		WB or B&B	
Quercus macrocarpa	Burr Oak	10	60mm		WB	Treeform
Quercus rubra	Red Oak	9	50mm		WB or B&B	
Quercus rubra	Red Oak	6	60mm		WB	
Ulmus x 'Pioneer'	Pioneer Elm	10	60mm		WB	
SHRUBS						
Amelanchier x grandiflora 'Princess Diana'	Princess Diana Serviceberry	19		150cm ht	15g pot	Multistem
Corylus americana	American Hazelnut	64		60cm ht	Pot	
Hydrangea arborescens 'Annabelle'	Annabelle Hydrangea	98		60cm ht	Pot	
Juniperus sabina	Savin Juniper	120		60cm ht/ spr	Pot	
Juniperus virginiana	Eastern Redcedar	330		100cm ht/ spr	Pot	
Physocarpus opulifolius	Common Ninebark	64		60cm ht	Pot	
Picea pungens 'Glauea Globosa'	Globe Blue Spruce	120		60cm ht/ spr	Pot	
Pinus mugo var. pumilio	Dwarf Mugo Pine	120		60cm ht/ spr	Pot	
Rhus aromatica	Fragrant Sumac	69		60cm ht	Pot	
Salix integra 'Hakuro Nishiki'	Dappled Willow	77		60cm ht	Pot	
Spiraea japonica 'Goldflame'	Goldflame Spirea	119		60cm ht	Pot	
Taxus cuspidata 'Nana'	Dwarf Japanese Yew	175		60cm ht/ spr	Pot	
Thuja occidentalis	Eastern White Cedar	86		100cm ht	Pot	
PERENNIALS, GRASSES, AND GROUNDCOVER						
Calamagrostis x acutiflora 'Karl Foerster'	Feather Reed Grass	471			1 g pot	
Heuchera micrantha 'Palace Purple'	Palace Purple Coral Bells	196			1 g pot	
Hosta 'Minuteman'	Minuteman Plantain Lily	86			1 g pot	
Nepeta faassenii 'Walker's Low'	Walker's Low Catmint	310			1 g pot	
Rudbeckia fulgida var. sullivantii 'Goldsturm'	Black Eyed Susan	248			1 g pot	
Salvia nemorosa 'Mainacht'	May Night Sage	286			1 g pot	

NOTES:

- Plant material to conform to the Canadian Nursery Trades association metric Guide Specifications for Nursery Stock, latest edition.
- Contractor to verify quantities listed: plant quantities to be supplied as shown in plan in case of discrepancies between plan and quantities listed.
- All plant material to be sourced from nurseries with an 800km radius.
- Provide two (2) year warranty for all plant material.

LANDSCAPE PLAN - SOUTH
1:1000

NOT FOR CONSTRUCTION



SPECIFICATIONS:

POSTS RAILS & PICKETS: EXTRUDED MARINE ALUMINUM 6061-T6 PRIME ALUMINUM, NORTH AMERICAN PRODUCED

FINISH: SEVEN STAGE ARCHITECTURALLY CERTIFIED PRETREATMENT AS PER ANA 2004, SUPER DURABLE ELECTROLYTICALLY APPLIED POWDER COAT - MIN THICKNESS 2.5 mils

POSTS: 76mm x 76mm (3"x3") .188 WALL

POST FLANGES: 152mm x 152mm x 13mm (6"x6"x1/2")

POST CAP: PYRAMID

RAILS: 38mm x 64mm (1 1/2" x 2 1/2") .120 WALL

PICKETS: 19mm x 38mm (3/4" x 1 1/2") .065 WALL

FITTINGS: 12GA STAMPED MARINE GRADE ALUMINUM FINISH AS DESCRIBED

WELDS: ALUMINUM

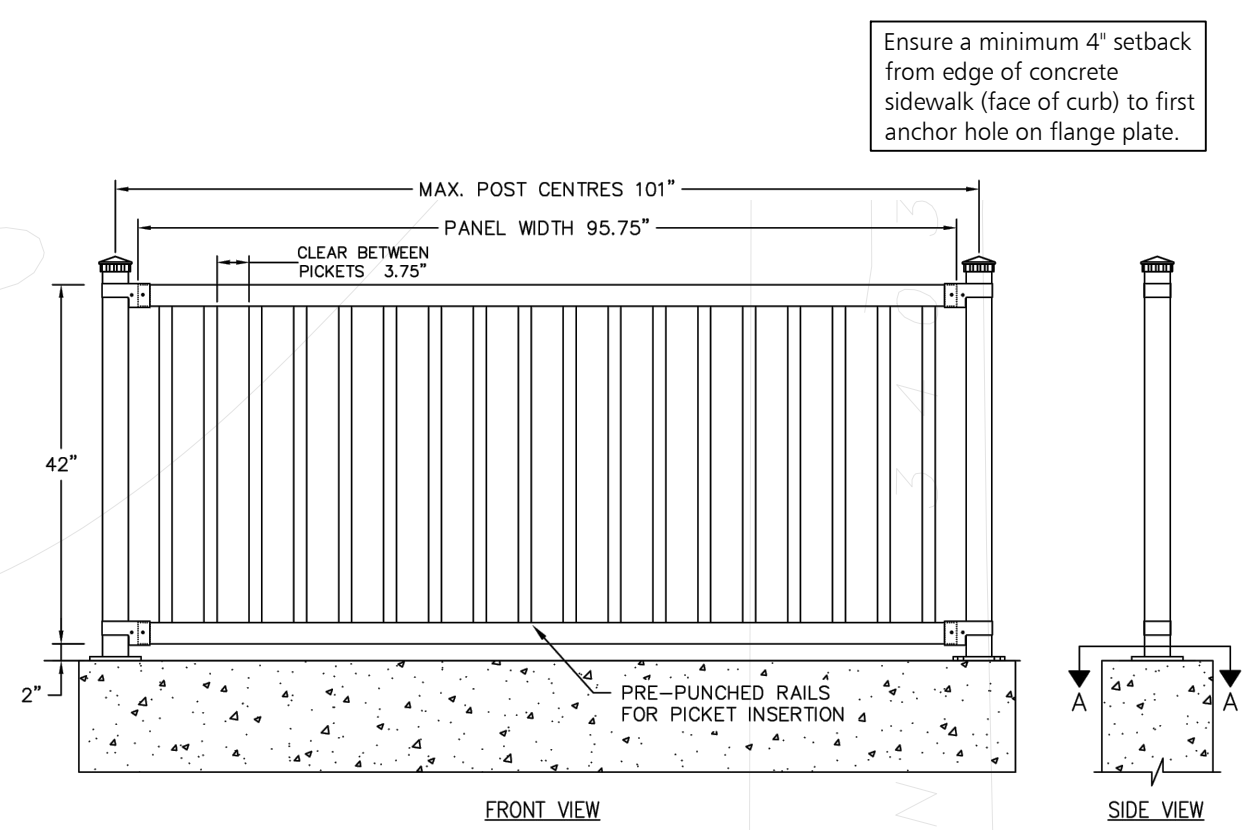
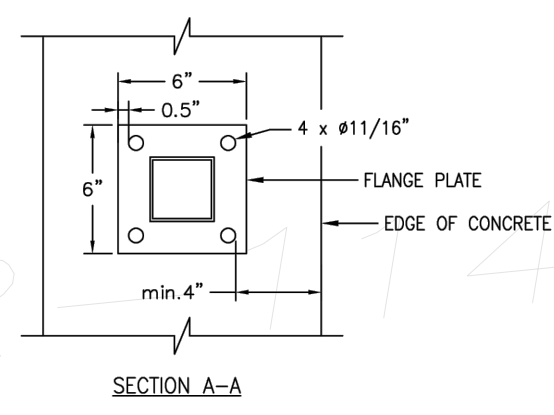
COLOUR: BLACK

WARRANTY: 20 YEAR LIMITED

COMMENTS:

IRON EAGLE II ALUMINUM ELEGANT EAGLE II

IRON EAGLE INDUSTRIES 1256 CARROLL BLVD., MISSISSAUGA, ON L5S 1R1 www.ironeagleind.com info@ironeagleind.com TEL: 905 670-2558 FAX: 905 670-2538



DECORATIVE METAL GUARDRAIL
N.T.S.

LEGEND

- Property Line
- Road Allowance Line
- 1.8m Ht. Galvanized Chain Link Fence with Angled Barbed Wire Extension
- 42" Ht. Decorative Metal Guardrail. See L.4 sheet.
- Proposed Deciduous Tree
- Proposed Evergreen Tree
- Proposed Deciduous Shrubs
- Proposed Evergreen Shrubs
- 150mm Depth Topsoil, Fine grade & Sod
- Perennials & Ornamental Grasses
- Concrete Paving (Natural Colour)
- Concrete Paving (Coloured - Charcoal)
- River rock

Note: All Drawings by Baker Turner inc. to be Printed in Colour.

REVISIONS

DATE	DESCRIPTION
Apr 23, 2024	Issued for SPA 3rd Submission
Nov 29, 2023	Issued for Submission
July 18, 2023	Issued for Submission
July 11, 2023	Issued for Coordination
April 7, 2023	Issued for SPA
Mar 17, 2023	Issued for Coordination
Mar 15, 2023	Issued for Coordination
Dec 7, 2022	Issued for SPA
Dec 1, 2022	Issued for Coordination

ASSOCIATION OF LANDSCAPE ARCHITECTS

BTi

Landscape Architecture | Site Design

Suite 200, Second Floor
2010 Winston Park Drive,
Oakville Ontario L6H 5R7

Tel: (289) 291-7620
email: tbs@bakerturner.com

Project Title

Ritche Bros. Auction House
2nd Line & Dufferin Road 109
Orangeville, ON

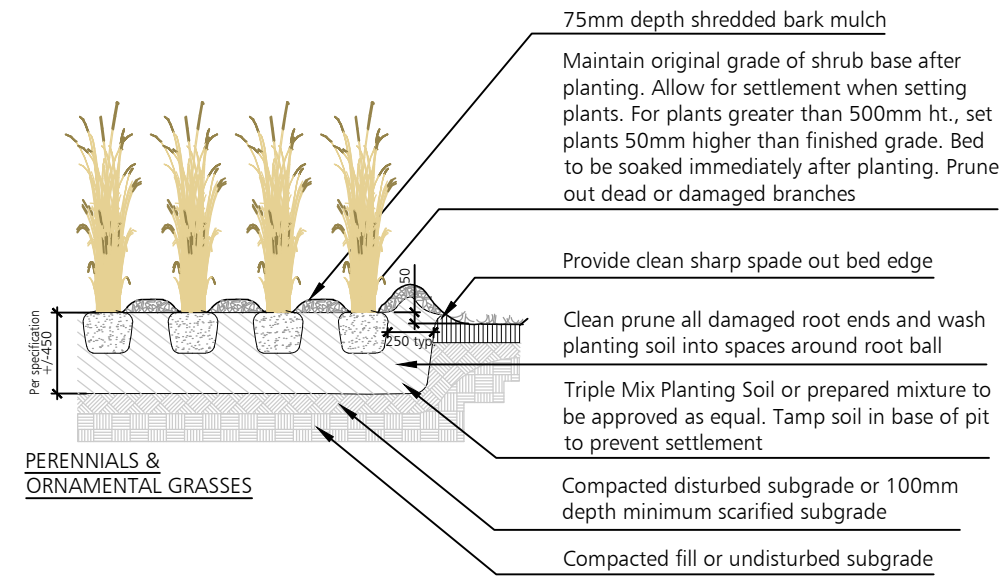
Enlargement Plan & Details

Date	Issued
September 2022	

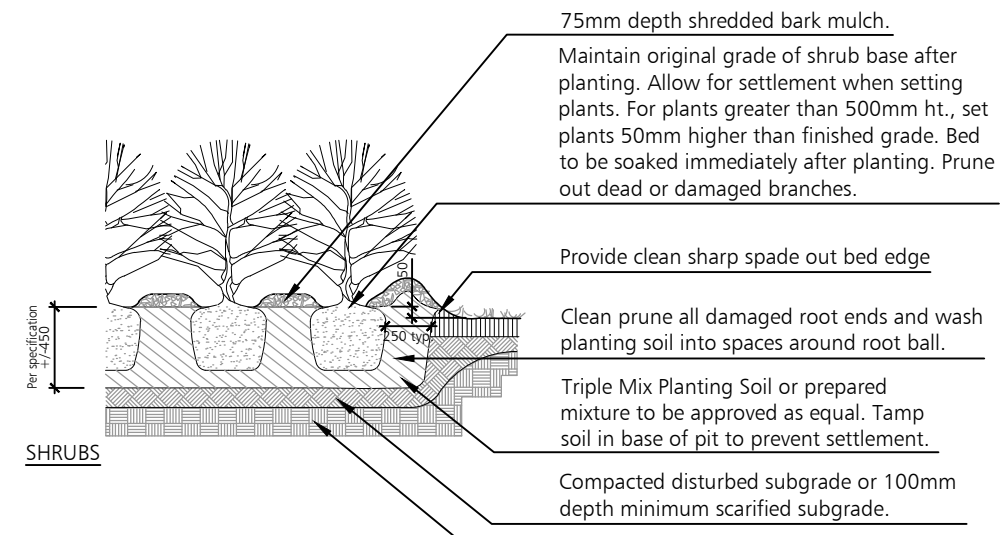
Job Number: BTI-1652
Scale: As Shown
Sheet Number: L.3 of 6

Drawn By: AP
Checked By: [Signature]
SPA Number: SPA# 06 2022

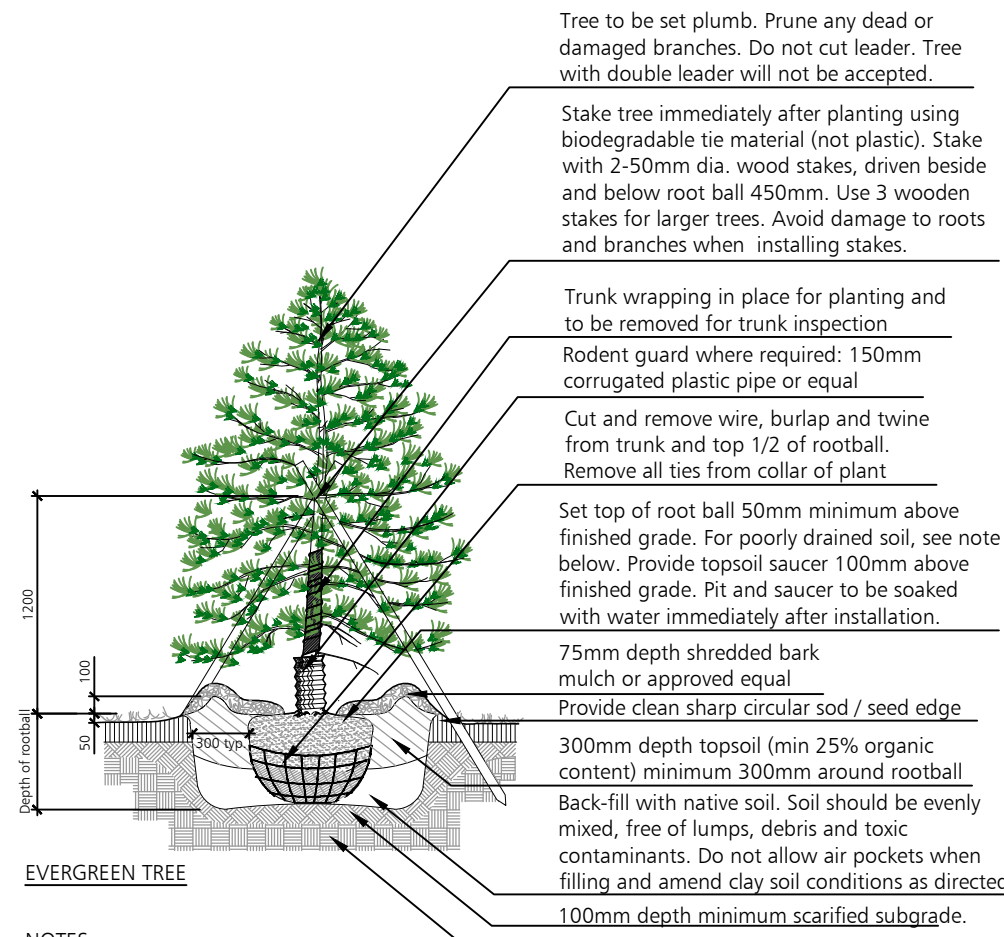
NOT FOR CONSTRUCTION



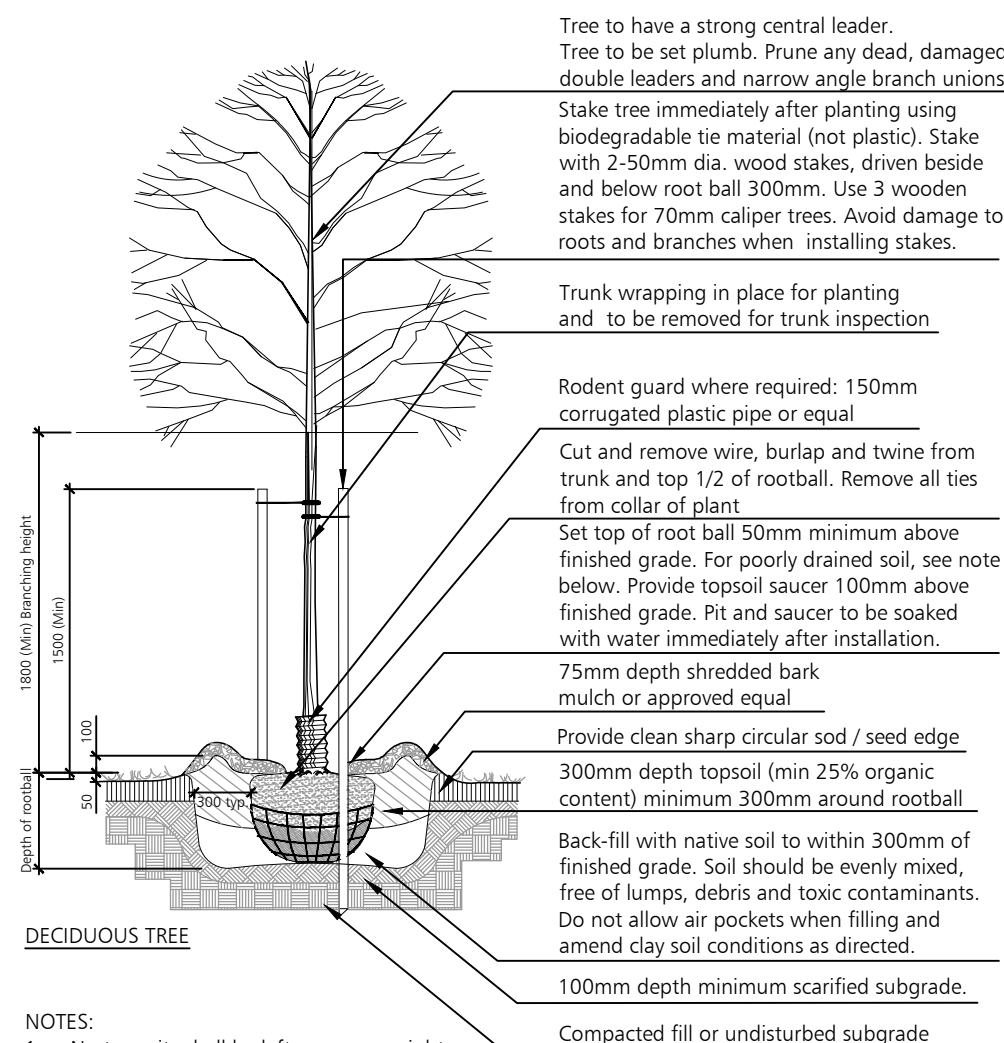
NOTES:
 1. For planting in poorly drained soils install plant material so that root collar is 75-100mm above grade.
 2. Remove container and maintain soil ball intact. Container to be cut carefully away from root system so as not to disturb soil ball.



NOTES:
 1. For planting in poorly drained soils install plant material so that root collar is 75-100mm above grade.
 2. Remove container and maintain soil ball intact. Container to be cut carefully away from root system so as not to disturb soil ball.

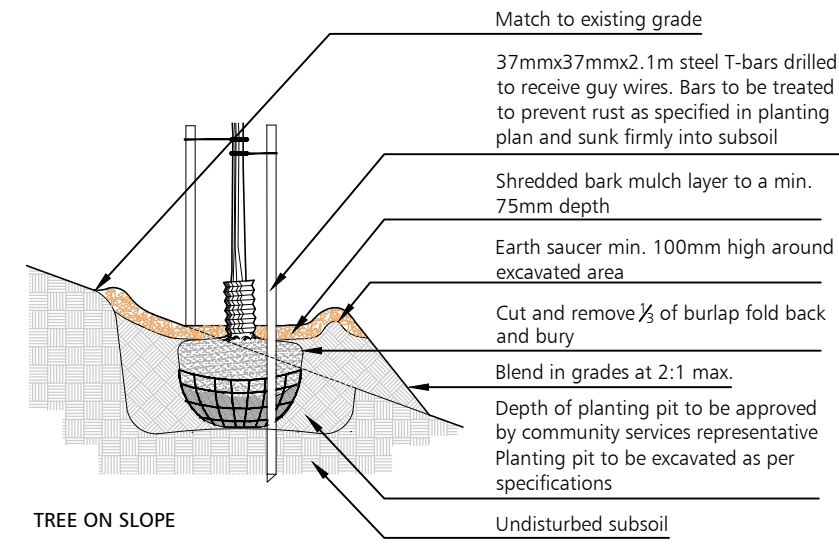


NOTES:
 1. No tree pits shall be left open over night.
 2. Sides surfaces of all tree pits to be scarified.
 3. For planting in poorly drained soils install plant material so that root collar is 75-100mm above grade.
 4. Trees to be planted by hand or backhoe. No tree spades or auguring permitted.
 5. Remove stakes at close of second growing season or upon expiry of warranty period.



NOTES:
 1. No tree pits shall be left open over night.
 2. Sides surfaces of all tree pits to be scarified.
 3. For planting in poorly drained soils install plant material so that root collar is 75-100mm above grade.
 4. Trees to be planted by hand or backhoe. No tree spades or auguring permitted.
 5. Remove stakes at close of second growing season or upon expiry of warranty period.

TYPICAL PLANTING DETAILS
 N.T.S.



TREE ON SLOPE

3' (0.91m) opening in guard rail (Typ.)

2 DECORATIVE METAL GUARDRAIL (Typ.)
 L.3

Taxus cuspidata 'Nana' (12)

Calamagrostis acutiflora 'Karl Foerster' (150)

Calamagrostis acutiflora 'Karl Foerster' (66)

Taxus cuspidata 'Nana' (12)

Prunus sargentii (3)

Rudbeckia fulgida var. 'sullivantii' 'Goldsturm' (31)

Salvia nemorosa 'Mainacht' (42)

Taxus cuspidata 'Nana' (11)

Taxus cuspidata 'Nana' (18)

1 BENCH (typ.)
 L.4

Prunus sargentii (5)

1 BENCH (typ.)
 L.4

Rudbeckia fulgida var. 'sullivantii' 'Goldsturm' (41)

Salvia nemorosa 'Mainacht' (49)

Salvia nemorosa 'Mainacht' (35)

Rudbeckia fulgida var. 'sullivantii' 'Goldsturm' (55)

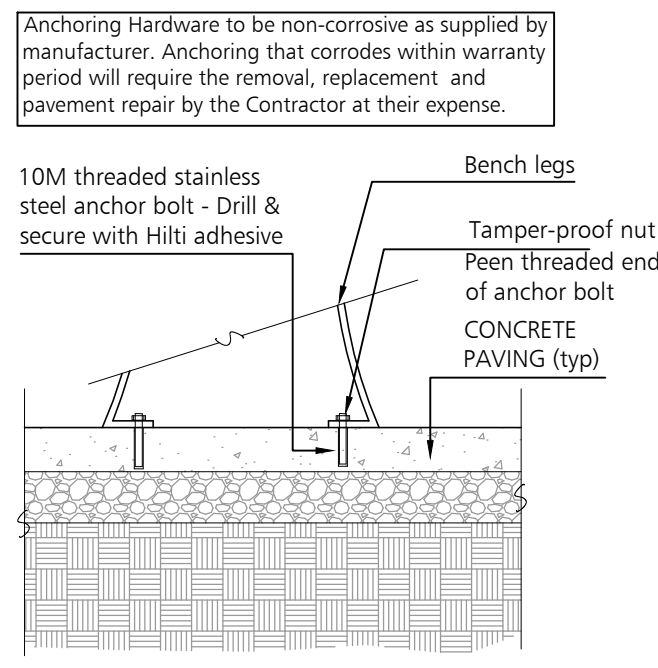
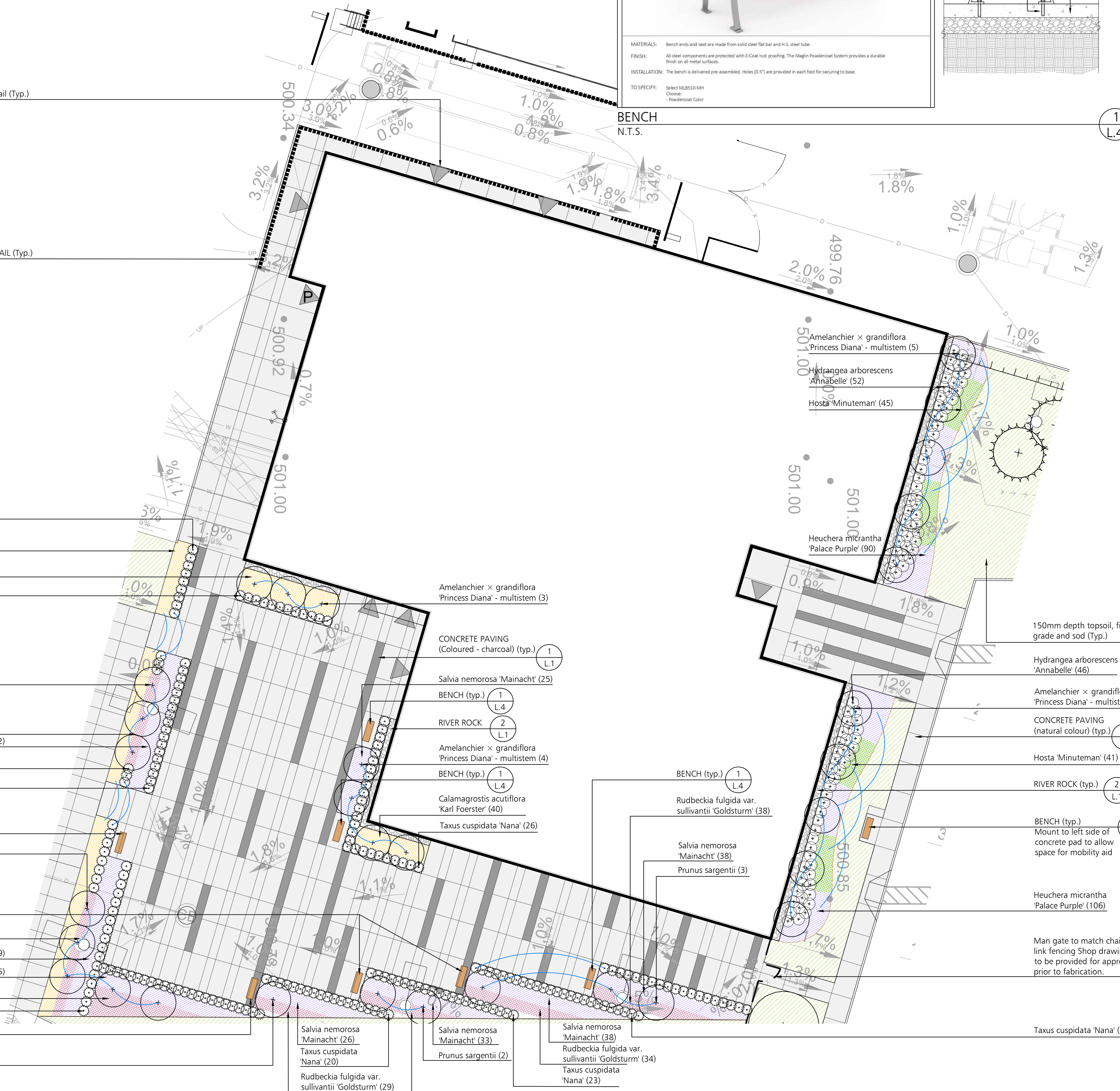
Taxus cuspidata 'Nana' (42)

1 BENCH (typ.)
 L.4

Amelanchier x grandiflora 'Princess Diana' - multistem (1)

Rudbeckia fulgida var. 'sullivantii' 'Goldsturm' (20)

ENLARGEMENT A
 1:200



LEGEND

- Property Line
- Road Allowance Line
- 1.8m Ht. Galvanized Chain Link Fence with Angled Barbed Wire Extension
- 42" Ht. Decorative Metal Guard Rail
- Proposed Deciduous Tree
- Proposed Evergreen Tree
- Proposed Deciduous Shrubs
- Proposed Evergreen Shrubs
- 150mm Depth Topsoil, Fine grade & Sod
- Perennials & Ornamental Grasses
- Concrete Paving (Natural Colour)
- Concrete Paving (Coloured - Charcoal)
- River rock
- Bench - 8 Total

Note: All Drawings by Baker Turner inc. to be Printed in Colour.

REVISIONS

DATE	DESCRIPTION
Apr 23, 2024	Issued for SPA 3rd Submission
Nov 29, 2023	Issued for Submission
July 18, 2023	Issued for Submission
July 11, 2023	Issued for Coordination
April 7, 2023	Issued for SPA
Dec 7, 2022	Issued for SPA
Dec 1, 2022	Issued for Coordination
Nov 4, 2022	Issued for SPA

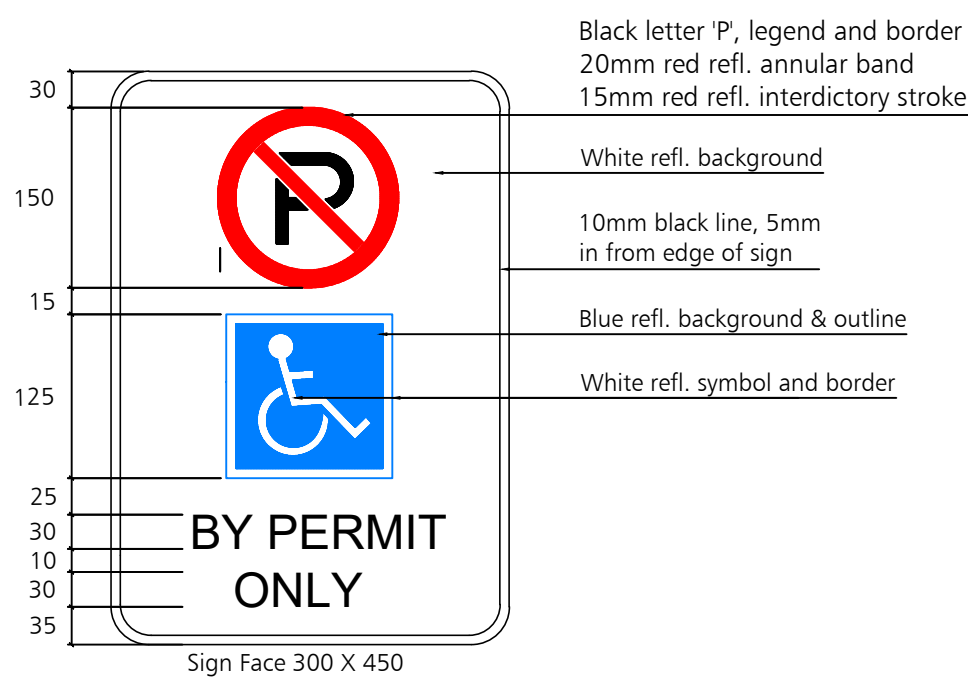
NOTE: Contractor is to check and verify all dimensions and conditions on the project, and is to immediately report any discrepancies to the landscape architect before proceeding with the work.

ASSOCIATION OF LANDSCAPE ARCHITECTS
 ONTARIO
 B.T.I. Landscape Architecture | Site Design
 Suite 200, Second Floor
 2010 Winston Park Drive
 Oakville Ontario L6H 5R7
 Tel: (289) 291-7620
 email: tbs@bakerturner.com

Project Title
 Ritche Bros. Auction House
 2nd Line & Dufferin Road 109
 Orangeville, ON
 Enlargement Plan & Details

Date	Issued
September 2022	
Job Number	BTI-1652
Scale	As Shown
Sheet Number	L.4 of 6
SPA Number	SPA# 06 2022

NOT FOR CONSTRUCTION

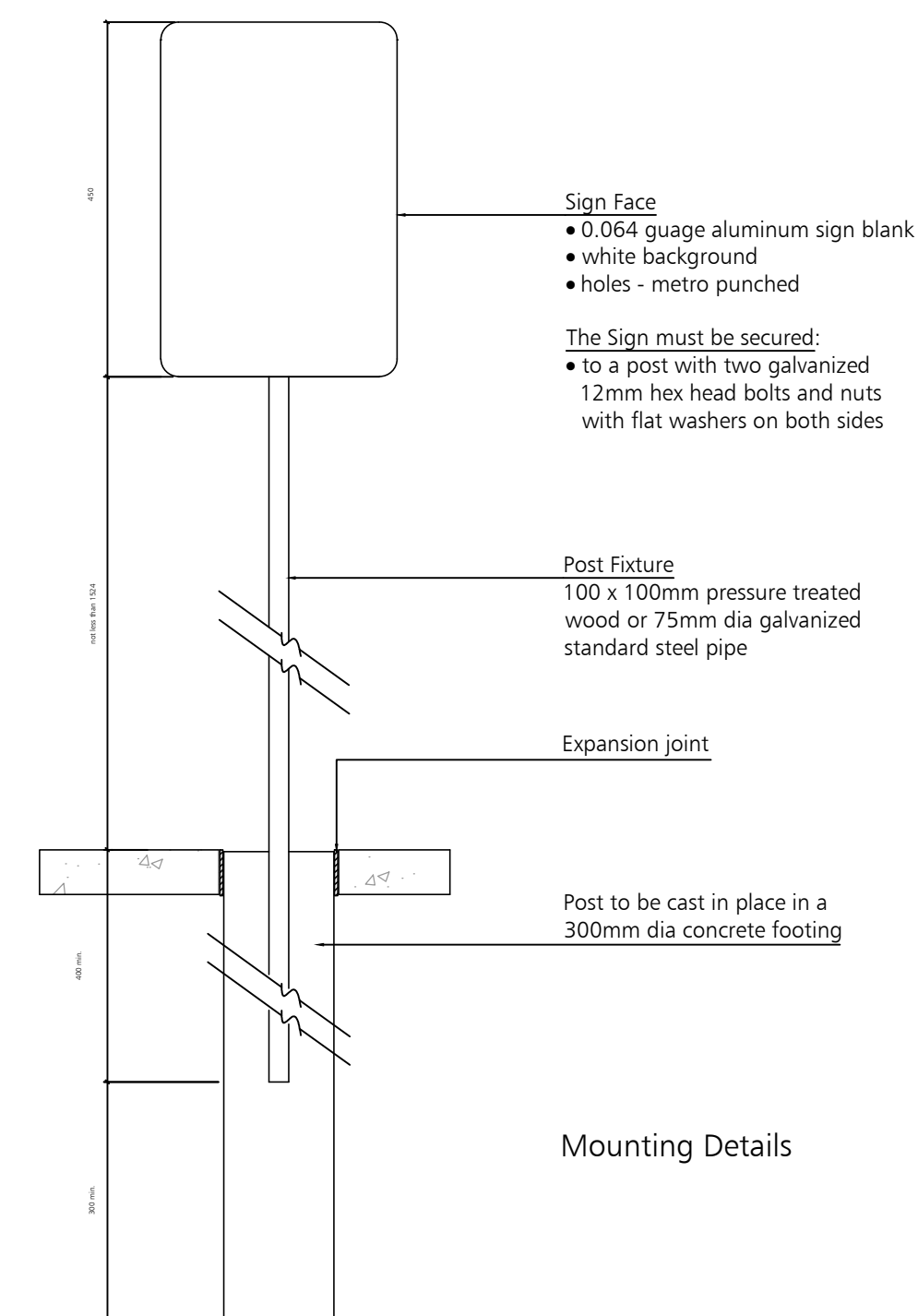


Sign Detail

Signage Requirements
All accessible parking stalls shall be designated by one sign per bay as per local by-law

The required sign must be mounted at least 1524mm and no more than 2438mm from the top of curb elevation. Sign must not obstruct the sidewalk.

Where an unobstructed building face is located no more than 2.0m from the face of the curb at accessible bay the sign may be mounted on the building face.



Mounting Details

ACCESSIBLE PARKING SIGNAGE
N.T.S.

5
L.5

200 SERIES
MTB-0210-00026
Legacy #MLPT210-S-RB-WCA

OVERHANG SIDE TO FACE MAIN WALKWAY

TO BE SURFACE MOUNTED USING NON-CORROSIVE HARDWARE

MATERIALS: Table frame is made from 3" x 2-3/8" structural I-Beam with mitered corners. Horizontal support beams are used for superior stability and structural integrity. Surface material is recycled plastic - Brown color.

FINISH: All steel components are protected with E-Coat rust proofing. The Maglin Powdercoat System provides a durable finish on all metal surfaces.

INSTALLATION: The table is delivered pre-assembled. Holes (0.5") are provided for securing to base.

TO SPECIFY: Select MTB-0210-00026
Choose:
- Powdercoat Color

HEIGHT: 29.75" (75.6cm) LENGTH: 70" (177.8cm) DEPTH: 66.5" (168.9cm) WEIGHT: 394.5lbs (179kg)

MAGLIN
Site Furniture

T 800 716 6506
F 877 250 9393
www.maglin.com
sales@maglin.com

- All drawings, specifications, design and details on this page remain the property of Maglin Site Furniture Inc. and may not be used without Maglin authorization.
- Details and specifications may vary due to continuing improvements of our products.

PICNIC TABLE - ACCESSIBLE
N.T.S.

4
L.5

200 SERIES
MTB-0210-00024
Legacy #MLPT210-S-RB

TO BE SURFACE MOUNTED USING NON-CORROSIVE HARDWARE

MATERIALS: Table frame is made from 3" x 2-3/8" structural I-Beam with mitered corners. Horizontal support beams are used for superior stability and structural integrity. Surface material is plastic - Brown color.

FINISH: All steel components are protected with E-Coat rust proofing. The Maglin Powdercoat System provides a durable finish on all metal surfaces.

INSTALLATION: The table is delivered pre-assembled. Holes (0.5") are provided for securing to base.

TO SPECIFY: Select MBE-0210-00024
Choose:
- Powdercoat Color

HEIGHT: 29.75" (75.6cm) LENGTH: 70" (177.8cm) WIDTH: 66.5" (168.3cm) WEIGHT: 385.39lbs (174.8kg)

MAGLIN
Site Furniture

T 800 716 6506
F 877 250 9393
www.maglin.com
sales@maglin.com

- All drawings, specifications, design and details on this page remain the property of Maglin Site Furniture Inc. and may not be used without Maglin authorization.
- Details and specifications may vary due to continuing improvements of our products.

PICNIC TABLE - STANDARD (Frame Colour: Black)
N.T.S.

3
L.5

1.8m HEIGHT GALAVANIZED CHAIN LINK FENCE WITH STRAIGHT BARBED WIRE EXTENSION
N.T.S.

Nominal Height of Fence 6'+1" Barb [2134mm]
C1 (Centres of posts) 10' 0" [3048mm] OR LESS

End Posts: 3 1/2" [89mm] Sch 40
Corner Posts: 3 1/2" [89mm] Sch 40
Line Posts: 2 3/8" [60mm] Sch 40
Toprail: 1 11/16" [43mm] Sch 40
Braces: 1 11/16" [43mm] Sch 40

B1 (Length of Terminal post) 10' 6" [3200mm]
H1 (Length above grade) 7' 3" [2210mm]
B2 (Length of Line post) 8' 6" [2591mm]
H2 (Length above grade) 5' 10" [1778mm]

Main Post footing #12" x 48" [305x1219mm]
Line Post footing #10" x 48" [254x1219mm]

Chainlink Fabric 2" [50mm] x 9ga. Galvanized Woven Wire 1.2oz
Bottom Wire 6ga.
Frame and Fittings: Galvanized

Note: Post footing varies with site condition, Refer to structural drawings for Foundation. G.C to co-ordinate.

TITLE: 6'+1" BARB CHAINLINK FENCE
SHIELD FENCE & WIRE PRODUCTS INC.
1256 Cardiff Blvd.
Mississauga, ON L5S 1R1

DRAWING NO: SDM-20231115-001
DATE: NOV 15, 2023

1.8m HEIGHT GALVANIZED CHAIN LINK FENCE WITH STRAIGHT BARBED WIRE EXTENSION
N.T.S.

2
L.5

1.8m HEIGHT GALVANIZED CHAIN LINK FENCE WITH ANGLED BARBED WIRE EXTENSION
N.T.S.

Nominal Height of Fence 6'+1" Barb [2134mm]
C1 (Centres of posts) 10' 0" [3048mm] OR LESS

Frame and Fittings: Galvanized

End Posts: 3 1/2" [89mm] Sch 40
Corner Posts: 3 1/2" [89mm] Sch 40
Line Posts: 2 3/8" [60mm] Sch 40
Toprail: 1 11/16" [43mm] Sch 40
Braces: 1 11/16" [43mm] Sch 40

Barb wire overhang 45"
B1 (Length of Terminal post) 10' 6" [3200mm]
H1 (Length above grade) 7' 3" [2210mm]
B2 (Length of Line post) 8' 6" [2591mm]
H2 (Length above grade) 5' 10" [1778mm]

Main Post footing #12" x 48" [305x1219mm]
Line Post footing #10" x 48" [254x1219mm]

Chainlink Fabric 2" [50mm] x 9ga. Galvanized Woven Wire 1.2oz
Bottom Wire 6ga.
Frame and Fittings: Galvanized

Note: Post footing varies with site condition, Refer to structural drawings for Foundation. G.C to co-ordinate.

TITLE: 6'+1" BARB CHAINLINK FENCE
SHIELD FENCE & WIRE PRODUCTS INC.
1256 Cardiff Blvd.
Mississauga, ON L5S 1R1

DRAWING NO: SF_20221129_13
DATE: NOV 29, 2021

1.8m HEIGHT GALVANIZED CHAIN LINK FENCE WITH ANGLED BARBED WIRE EXTENSION
N.T.S.

1
L.5

Note: All Drawings by Baker Turner inc. to be Printed in Colour.

REVISIONS

DATE	DESCRIPTION
Apr 23, 2024	Issued for SPA 3rd Submission
Nov 29, 2023	Issued for Submission
July 18, 2023	Issued for Submission
July 11, 2023	Issued for Coordination
April 7, 2023	Issued for SPA
Dec 7, 2022	Issued for SPA
Dec 1, 2022	Issued for Coordination
Nov 4, 2022	Issued for SPA

NOTE: Contractor is to check and verify all dimensions and conditions on the project, and is to immediately report any discrepancies to the landscape architect before proceeding with the work.



Landscape Architecture + Site Design
Suite 200, Second Floor
2010 Winston Park Drive
Oakville Ontario L6H 5R7
Tel: (289) 291-7620
email: tbs@bakerturner.com

Project Title

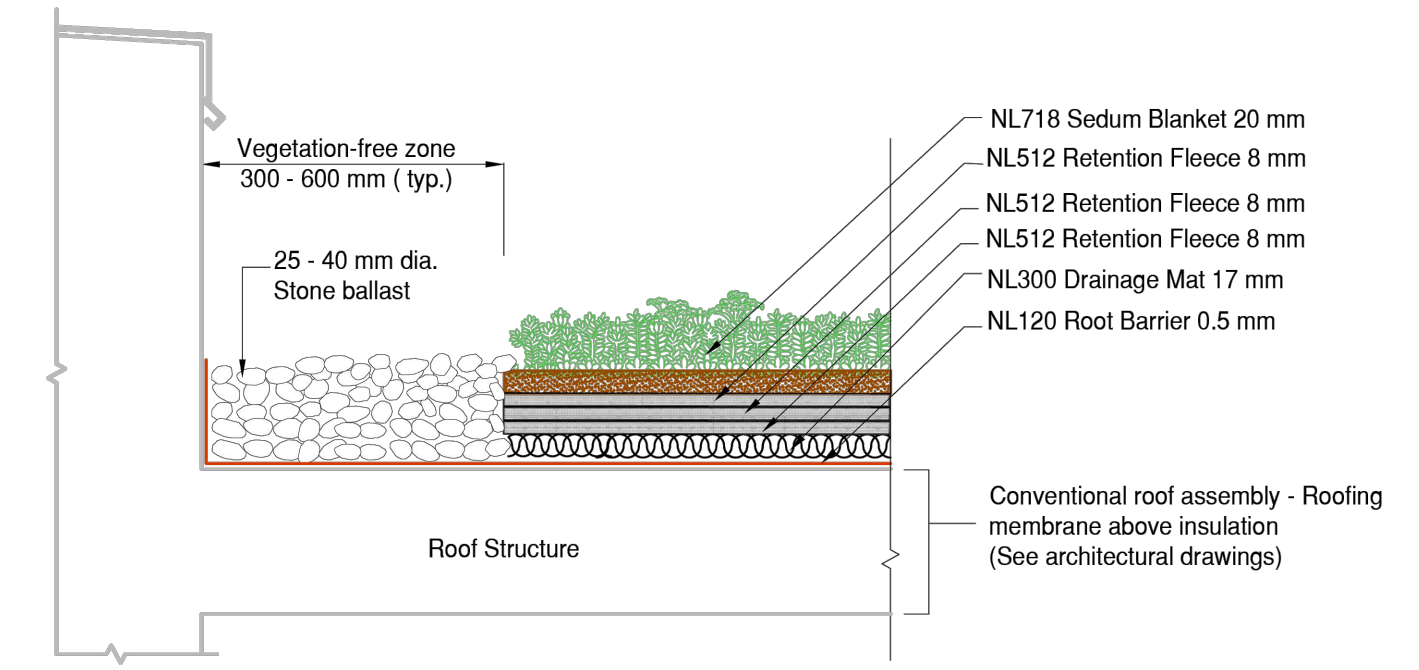
Ritche Bros. Auction House
2nd Line & Dufferin Road 109
Orangeville, ON

Details

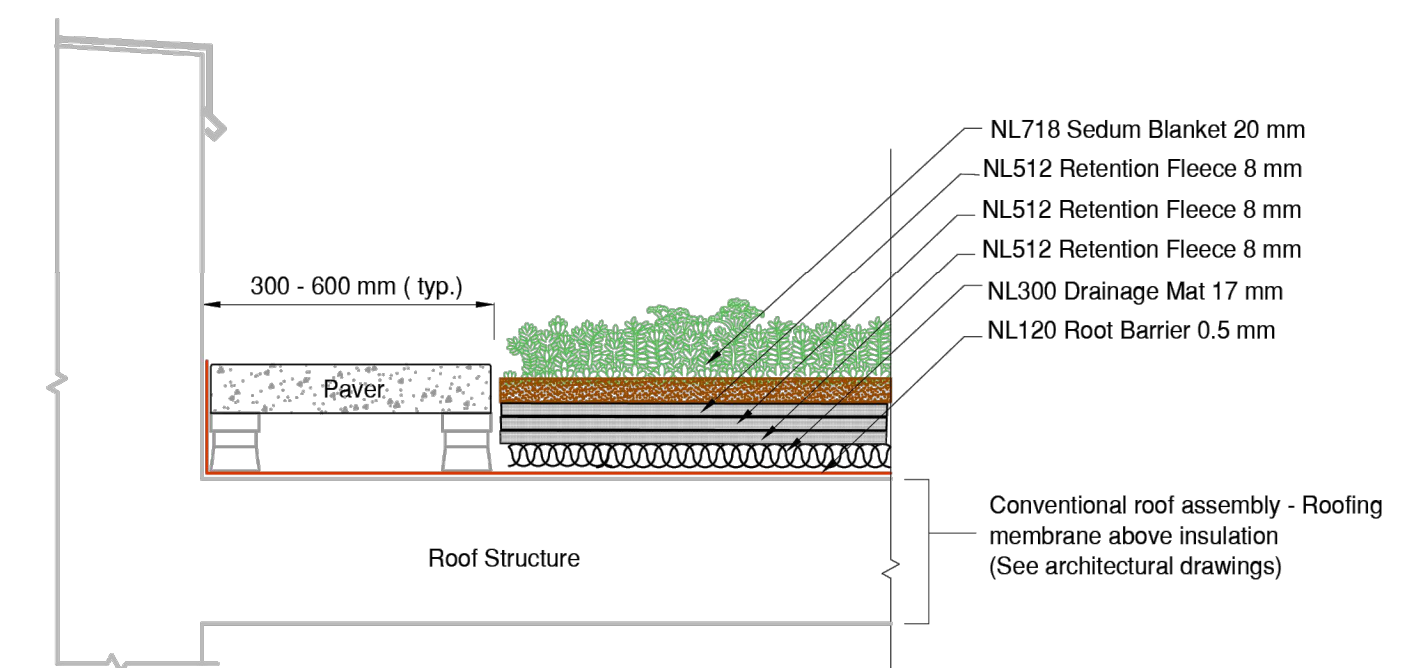
Date	Issued
September 2022	
Job Number	Drawn
BTI-1652	
Scale	Checked By
As Shown	MT
Sheet Number	SPA Number
L5 of 6	SPA# 06 2022

PROGRESS PLOT
For Client Review Only
Not for construction

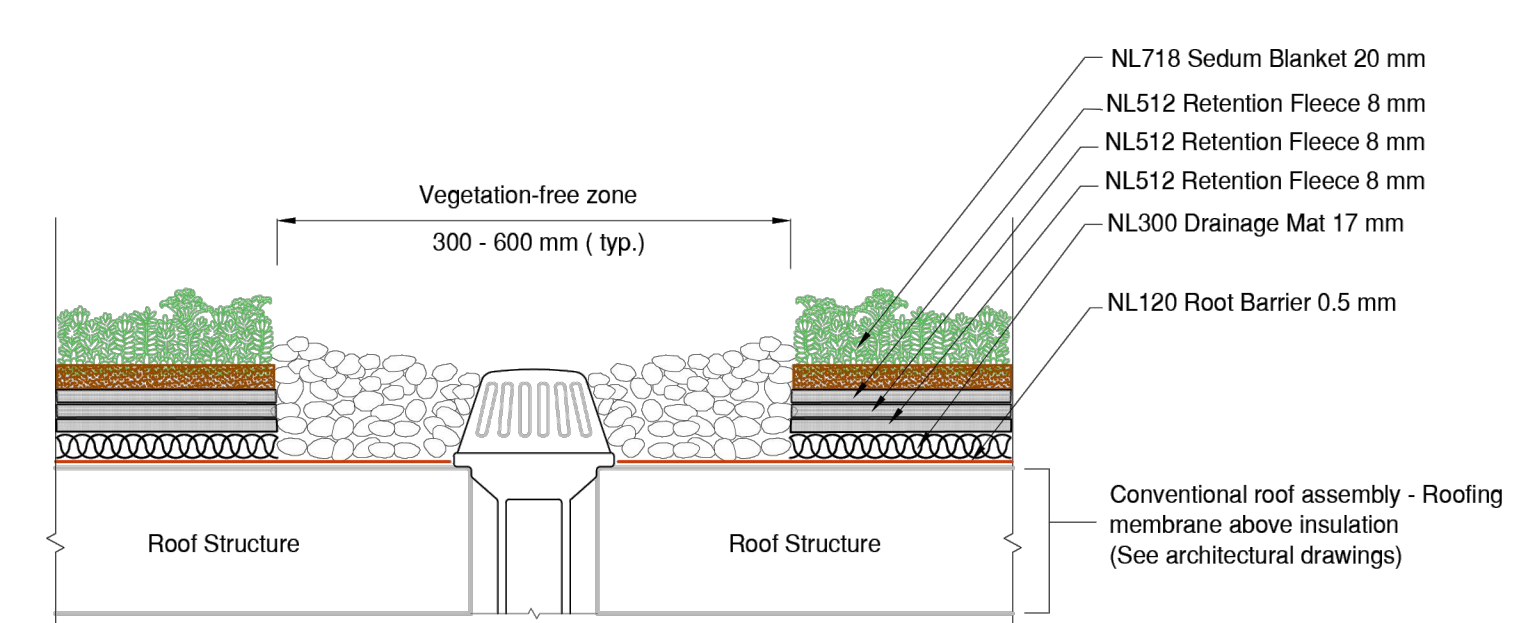
Contractors must verify all dimensions and conditions in the field. Any discrepancy must be reported to Next Level Stormwater Management prior to construction. This drawing must not be used for construction unless sealed and signed by the architect. These drawings are the property of Next Level Stormwater Management and must be returned upon completion of the work. © 2017 Next Level Stormwater Management all rights reserved. Not to be reproduced or released in any form without the written authorization of Next Level Stormwater Management.



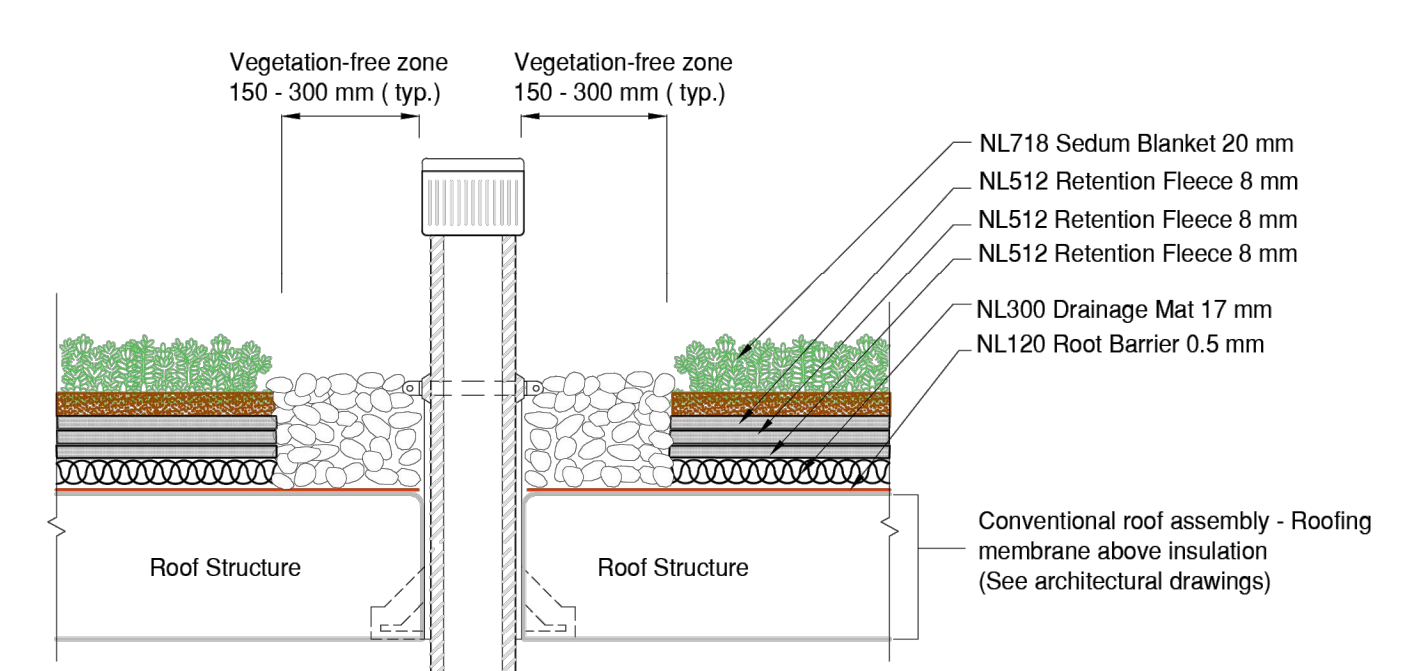
LiteN'Less Classic III 718 Stone Edge Detail
Conventional Roofing Assembly




LiteN'Less Classic III 718 Paver Edge Detail
Conventional Roofing Assembly



LiteN'Less Classic III 718 Drain Detail
Conventional Roofing Assembly



LiteN'Less Classic III 718 Penetration Detail
Conventional Roofing Assembly

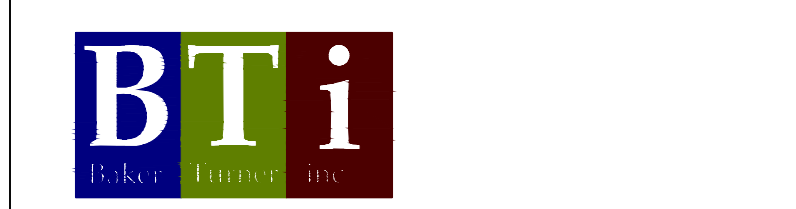
LEGEND
 Green Roof

Note: All Drawings by Baker Turner inc. to be Printed in Colour.

REVISIONS

DATE	DESCRIPTION
Apr 23, 2024	Issued for SPA 3rd Submission
Nov 29, 2023	Issued for Submission
July 18, 2023	Issued for Submission
July 11, 2023	Issued for Coordination
April 7, 2023	Issued for SPA

NOTE: Contractor is to check and verify all dimensions and conditions on the project, and is to immediately report any discrepancies to the landscape architect before proceeding with the work.



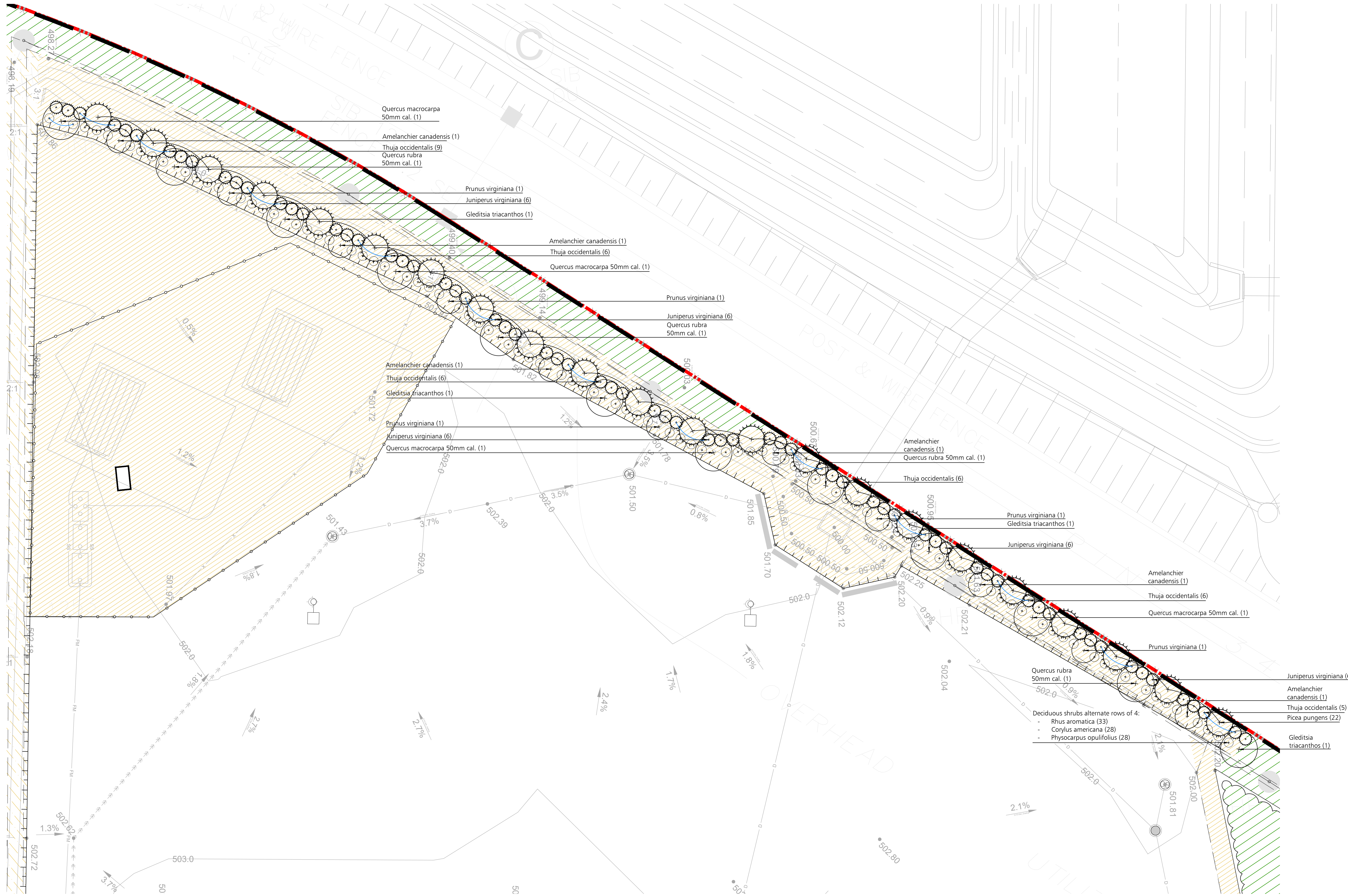
Landscape Architecture | Site Design
Suite 200, Second Floor
2010 Winston Park Drive,
Oakville Ontario L6H 5R7
Tel: (289) 291-7620
email: tba@bakerturner.com

Project Title
Ritche Bros. Auction House
2nd Line & Dufferin Road 109
Orangeville, ON
Green Roof Plan and Details

Date	Issued
September 2022	
Job Number	Drawn By
BTI-1652	
Scale	Checked By
As Shown	MT
Sheet Number	SPA Number
L6 of 6	SPA# 06 2022



PROGRESS PLOT
For Client Review Only
Not for construction



ENLARGEMENT B
1:300

LEGEND

- Property Line
- Road Allowance Line
- 1.8m Ht. Galvanized Chain Link Fence with Angled Barbed Wire Extension
- 42" Ht. Decorative Metal Guardrail. See L.4 sheet.
- Proposed Deciduous Tree
- Proposed Evergreen Tree
- Proposed Deciduous Shrubs
- Proposed Evergreen Shrubs
- 150mm Depth Topsoil, Fine grade & Sod
- Perennials & Ornamental Grasses
- Concrete Paving
- River rock

Note: All Drawings by Baker Turner inc. to be Printed in Colour.

REVISIONS

DATE	DESCRIPTION
Apr 23, 2024	Issued for SPA 3rd Submission
Nov 29, 2023	Issued for Submission
July 18, 2023	Issued for Submission
July 11, 2023	Issued for Coordination
April 7, 2023	Issued for SPA
Mar 17, 2023	Issued for Coordination
Mar 15, 2023	Issued for Coordination
Dec 7, 2022	Issued for SPA
Dec 1, 2022	Issued for Coordination

NOTE: Contractor is to check and verify all dimensions and conditions on the project, and is to immediately report any discrepancies to the landscape architect before proceeding with the work.



BTi
Landscape Architecture | Site Design

Suite 200, Second Floor
2010 Winston Park Drive,
Oakville Ontario L6H 5R7
Tel: (289) 291-7620
email: tba@bakerturner.com

Project Title
Ritche Bros. Auction House
2nd Line & Dufferin Road 109
Orangeville, ON
Enlargement Plan

Date	Issued
September 2022	
Job Number	Drawn By
BTI-1652	AP
Scale	Checked By
As Shown	MT
Sheet Number	SPA Number
L7 of	SPA# 06 2022

NOT FOR CONSTRUCTION